

[STAY4]

RESIDENCE



squareone

squareone

[STAY4 RESIDENCES] - SquareOne

A premier investment opportunity located in the heart of Limassol's Historical Centre, STAY4 Residences offers modern and stylish apartments, featuring exclusive studio units tailored for contemporary living and strong rental demand, as well as commercial spaces on the ground floor.

Residents can stroll in the elegant streets of Limassol's charming seafront.

Optional private parking adds an extra layer of convenience for homeowners and tenants alike.

With a prime location, high ROI potential, and excellent rental yields, STAY4 is designed to attract both investors seeking lucrative returns and homebuyers looking for lifestyle and value.

*No VAT is applicable to the above units as they are classified as resale apartments.

[SQUAREONE.COM.CY](https://squareone.com.cy)

Property Type: *Mixed-Use*

Location: *Historic Center*

Status: *Off Plan*

Completion Date: *30 July 2026*

Energy Efficiency: *Grade A*





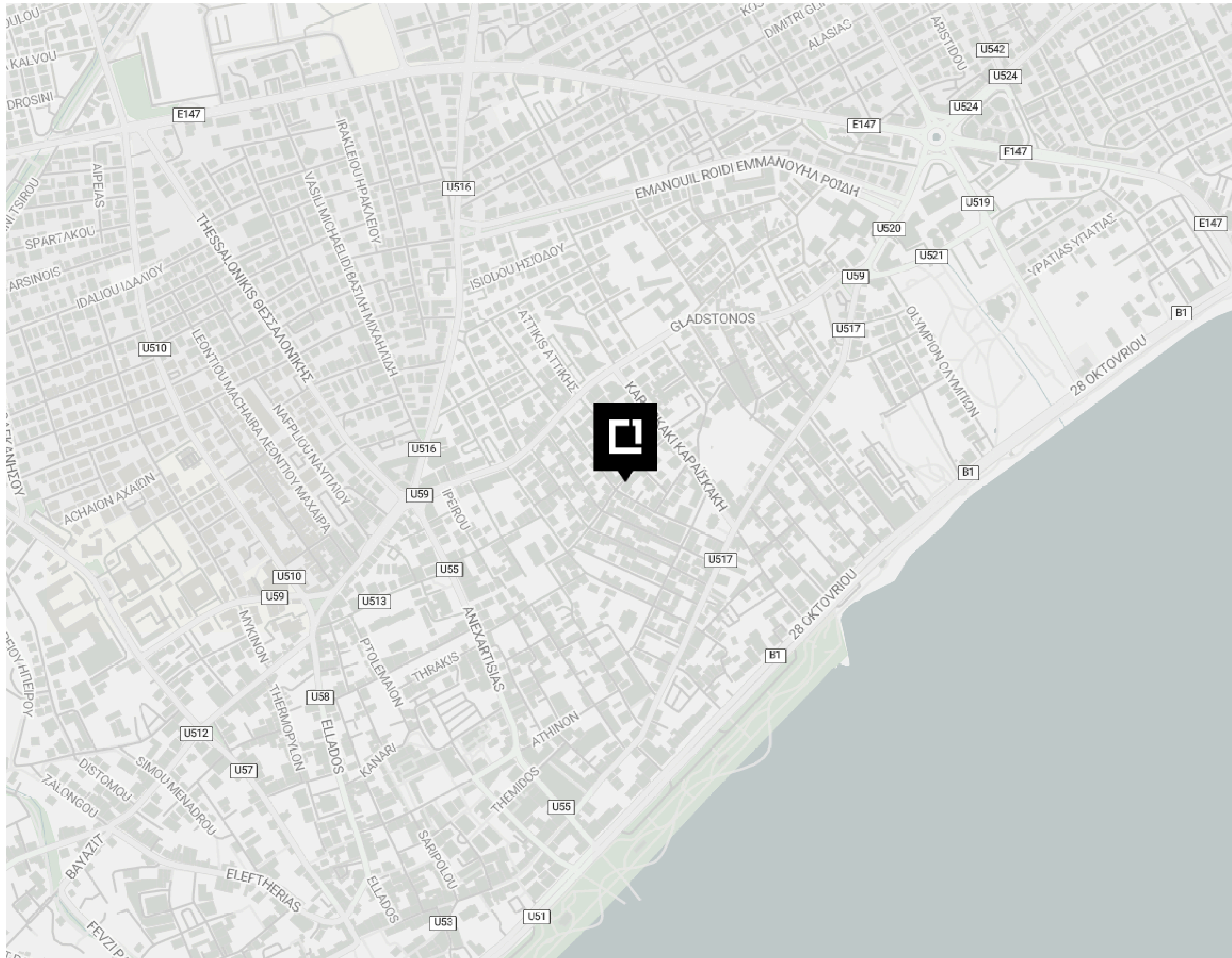



SQone




LOCATION

Historic Center



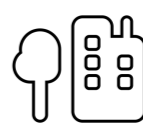
 **500m**
from Amenities

 **600m**
from School

 **200m**
from the Beach

 **50km**
from Airport

 **200m**
from Public Transport

 **800m**
from Resort



Key Specifications

Customisations provided by SQONE Design Team

The penthouses are thoughtfully designed with a distinct approach, offering enhanced features and a distinct living experience that sets them apart from all other units. With elevated specifications, premium materials, and tailored design features, these residences embody a higher standard of luxury and sophistication. These elevated specifications also contribute to increased market appeal and higher potential returns, making the penthouses especially attractive to investors.

3.2m Net Internal Height

2.9m Thermal Aluminium Windows

Italian Kitchen & Wardrobes

European Ceramic Tiles

Grip Ceramic Tiled Roof Garden

BBQ Area

Jacuzzi Provision

Aluminium Pergola Provision

Parquet Flooring Semi Solid

Interior Design Services (FF&E)



[STAY4]

RESIDENCE

Unit	Bedrooms	Bathrooms	Covered Area	Covered Veranda
1	2	-	97m ²	12m ²
2	2	-	96m ²	12m ²
3	2	-	90m ²	11m ²
4	studio	-	75m ²	-
5	studio	-	77m ²	8m ²
6	studio	-	74m ²	8m ²
7	studio	-	74m ²	13m ²
8	studio	-	35m ²	4m ²
9	studio	-	68m ²	6m ²

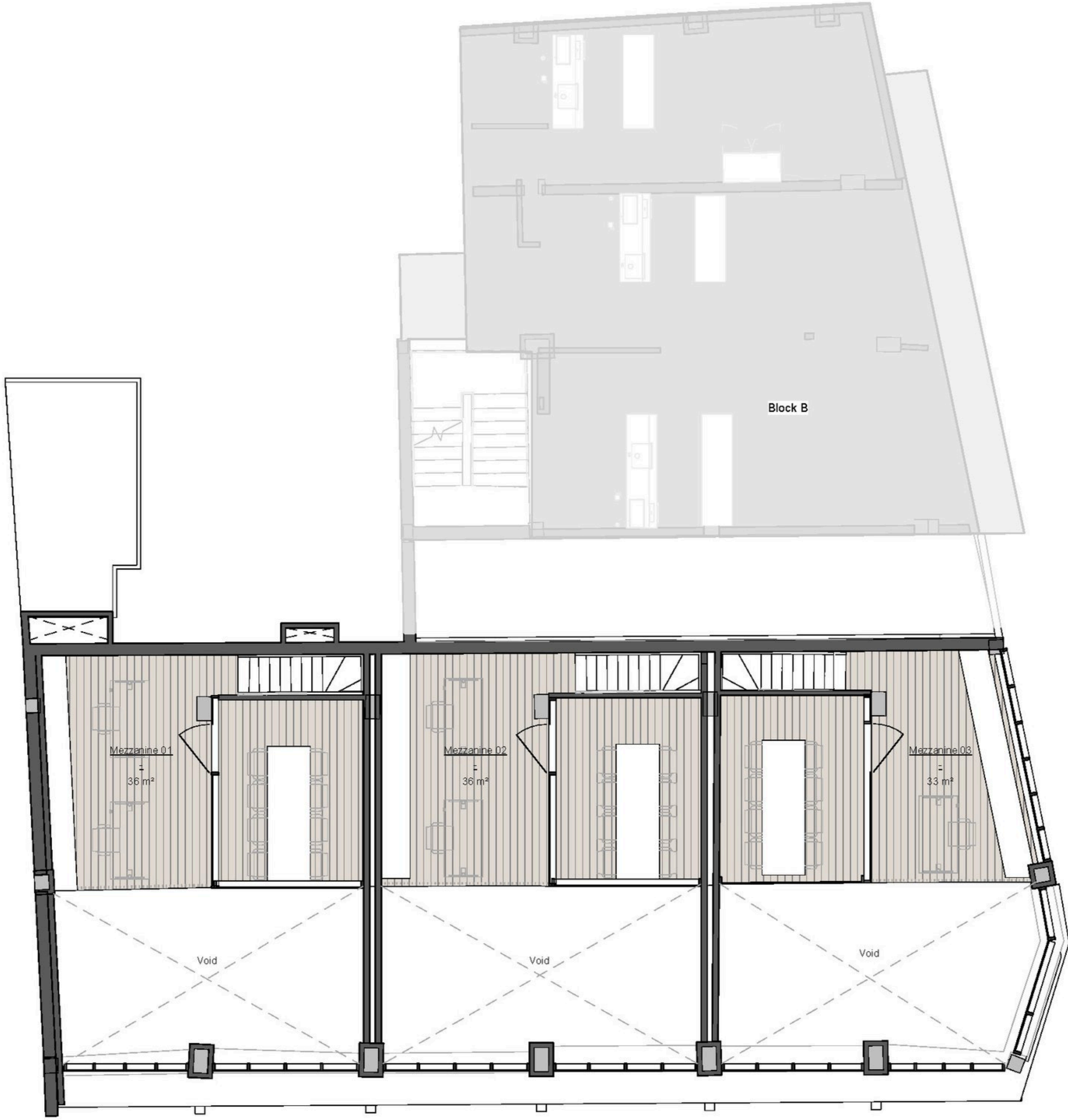
FLOOR PLANS

Ground Floor



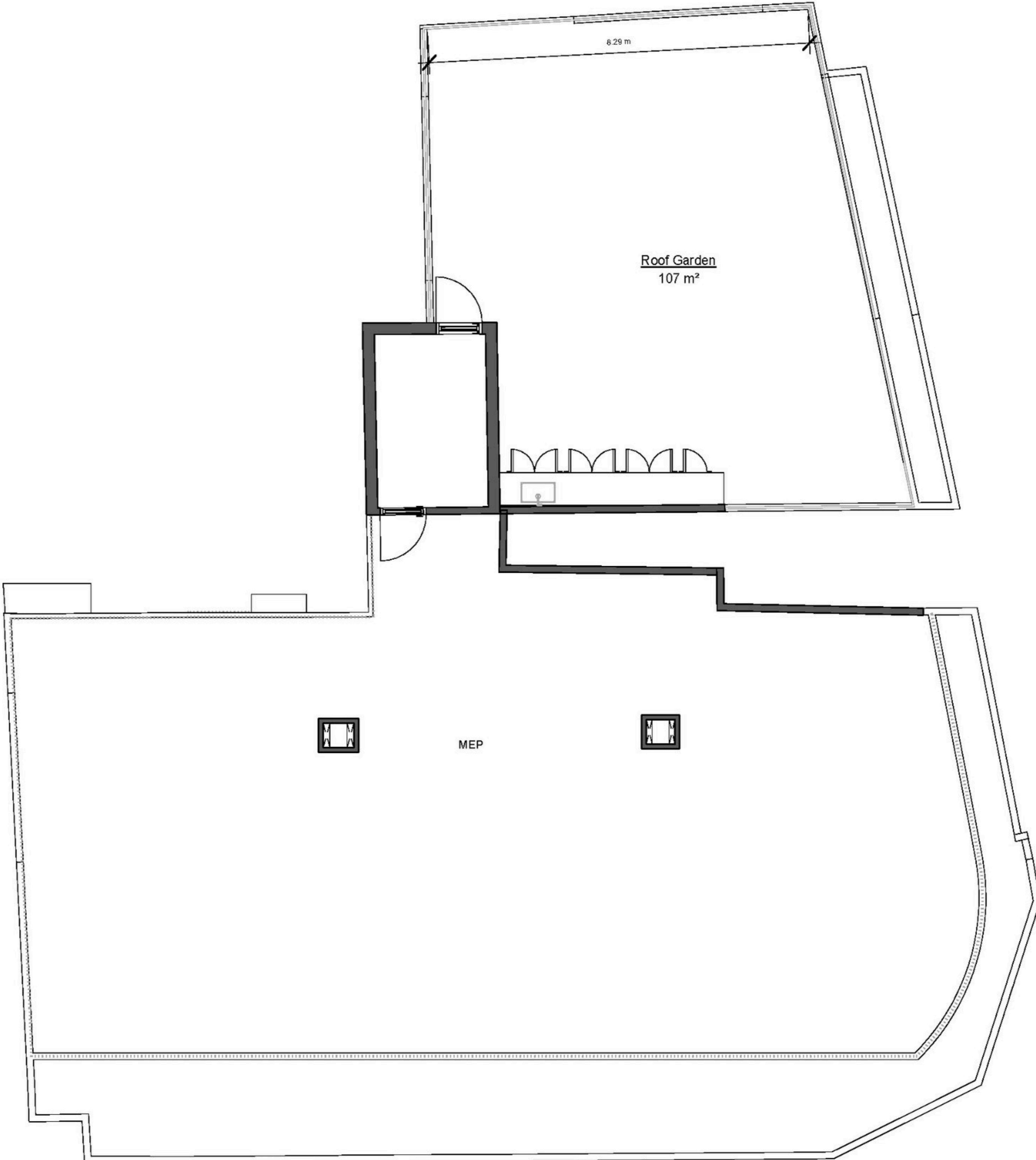
FLOOR PLANS

Mezzanine



FLOOR PLANS

Roof Garden







WHO WE ARE

25+ Company
Employees

80+ Million Euro
in Sales

300+ Apartment
Units

32 Development
Projects

3 Active
Cities

30K+ Square Meters of
Residential Space

SquareOne is a leading real estate development and investment group specializing in residential, commercial, and hospitality properties in Limassol and London. Our commitment to excellence and innovation sets us apart in the industry. Combining passion, experience, and professionalism we deliver the ultimate living and working environments. Our diverse portfolio includes luxury residential developments, prime commercial spaces, and unique hospitality ventures, all designed to meet the dynamic needs of these vibrant cities.

squareone