



[STAY3]

RESIDENCE



squareone



[STAY3 RESIDENCES] - SquareOne

A premier investment opportunity in the heart of Limassol's Historical Center. This exclusive development offers 12 luxurious apartments, including studios, 1-bedroom, and 2-bedroom units, designed for modern living and strong rental appeal.

Residents enjoy access to a beautiful rooftop garden, perfect for relaxation in the city's most vibrant area. Optional private parking ensures added convenience.

With a prime location, high ROI, and competitive rental yields, STAY3 is the perfect choice for investors and homebuyers seeking value and style in Limassol.

[SQUAREONE.COM.CY](https://squareone.com.cy)

Property Type: *Residential*

Location: *Historic Center*

Status: *Under Construction*

Completion Date: *TBA*

Energy Efficiency: *Grade A*



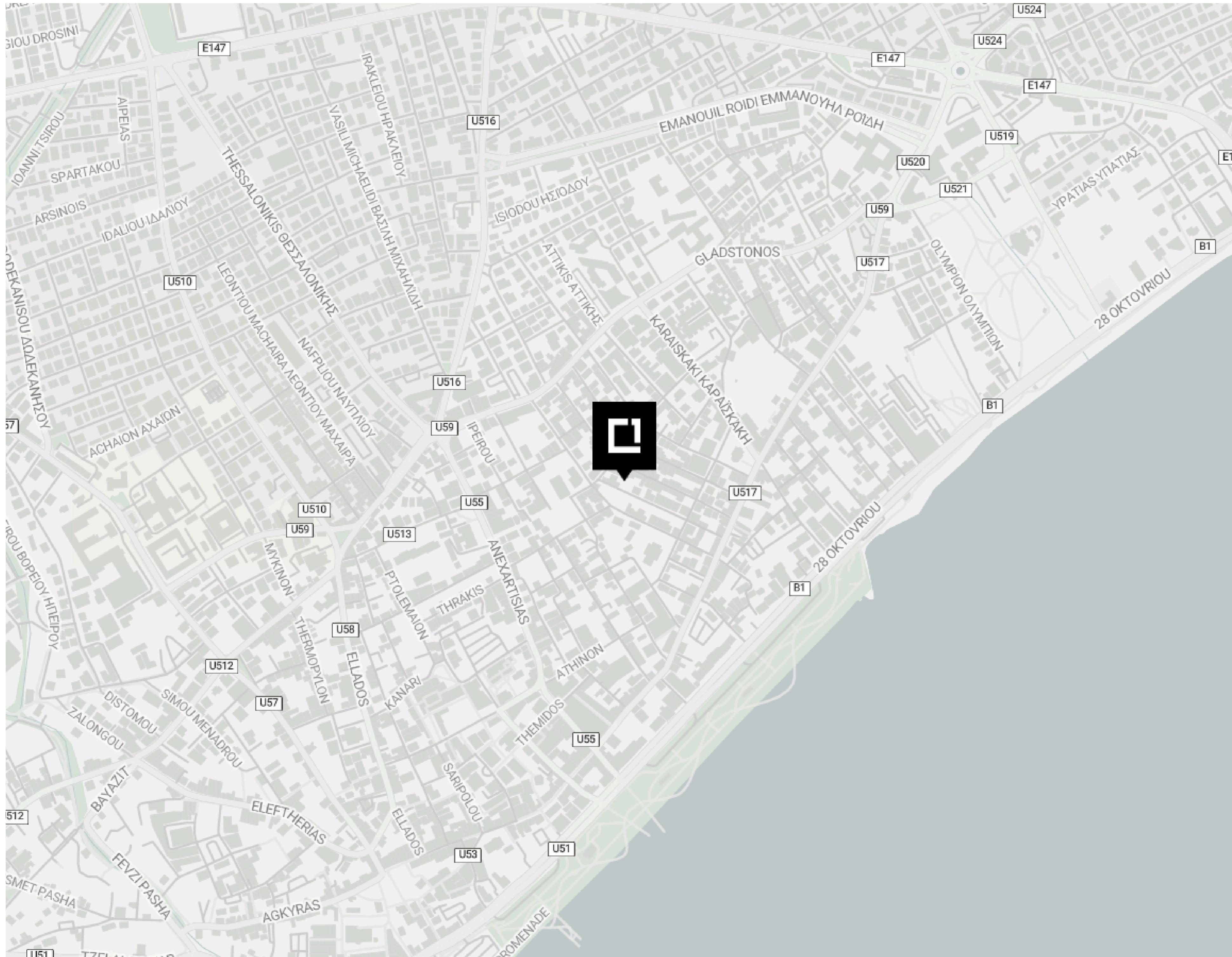








LOCATION

Historic Center



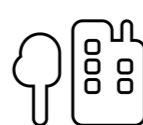
 **100m**
from Amenities

 **300m**
from School

 **500m**
from the Beach

 **50km**
from Airport

 **200m**
from Public Transport

 **800m**
from Resort



Key Specifications

Customisations provided by SQONE Design Team

The penthouses are thoughtfully designed with a distinct approach, offering enhanced features and a distinct living experience that sets them apart from all other units. With elevated specifications, premium materials, and tailored design features, these residences embody a higher standard of luxury and sophistication. These elevated specifications also contribute to increased market appeal and higher potential returns, making the penthouses especially attractive to investors.

3.2m Net Internal Height

2.9m Thermal Aluminium Windows

Italian Kitchen & Wardrobes

European Ceramic Tiles

Grip Ceramic Tiled Roof Garden

BBQ Area

Jacuzzi Provision

Aluminium Pergola Provision

Parquet Flooring Semi Solid

Interior Design Services (FF&E)



[STAY3]

RESIDENCE

Unit	Bedrooms	Bathrooms	Covered Area	Covered Veranda
101	2	-	61m ²	19m ²
102	Studio	-	31m ²	4m ²
103	Studio	-	31m ²	4m ²
104	Studio	-	31m ²	4m ²
105	Studio	-	31m ²	4m ²
106	1	-	49m ²	4m ²
201	2	-	61m ²	10m ²
202	Studio	-	31m ²	4m ²
203	Studio	-	31m ²	4m ²
204	Studio	-	31m ²	4m ²
205	Studio	-	31m ²	4m ²
206	2	-	57m ²	11m ²

FLOOR PLANS

Ground Floor

Floorplans

Ground Floor

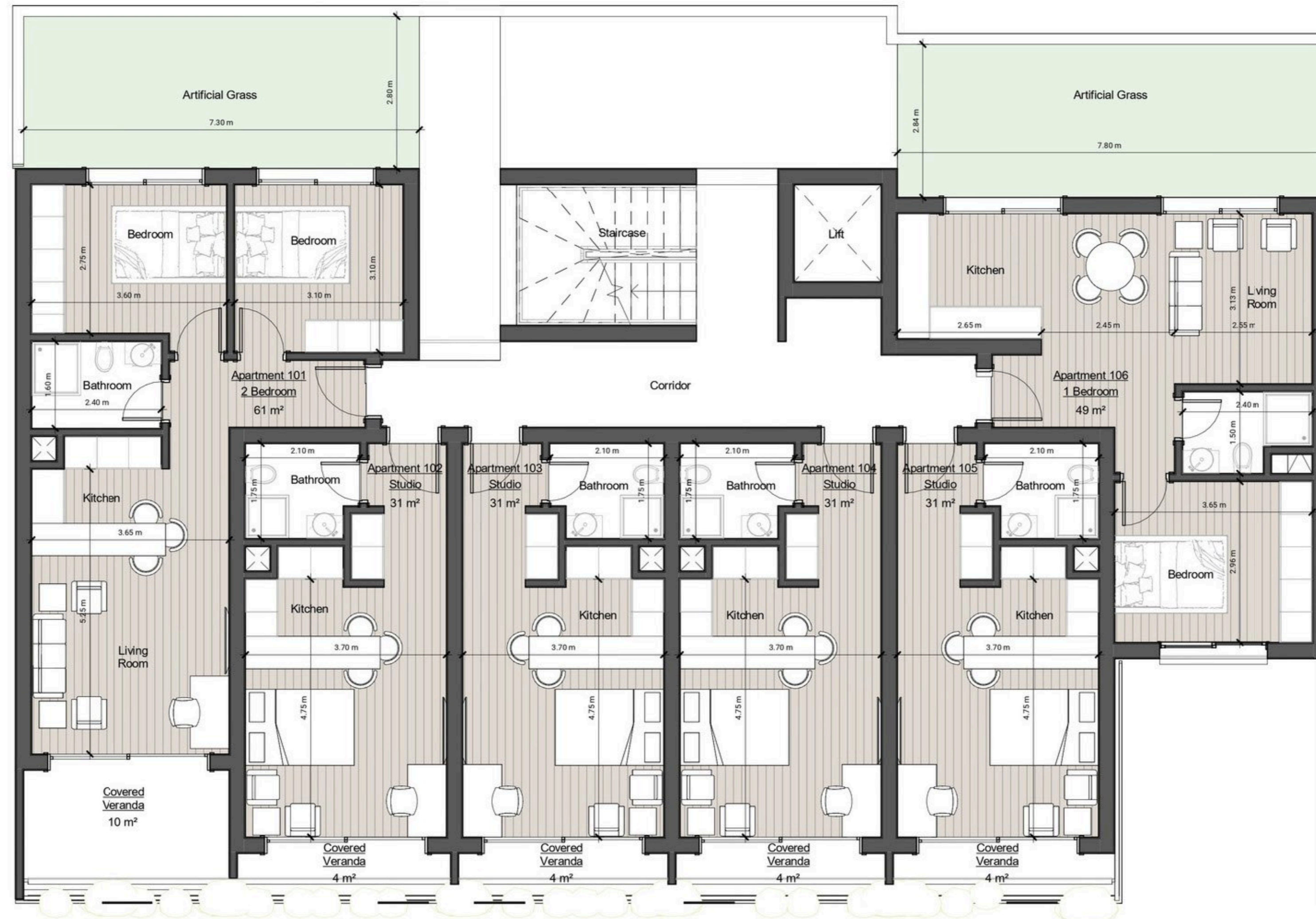


FLOOR PLANS

First Floor

Floorplans

First Floor

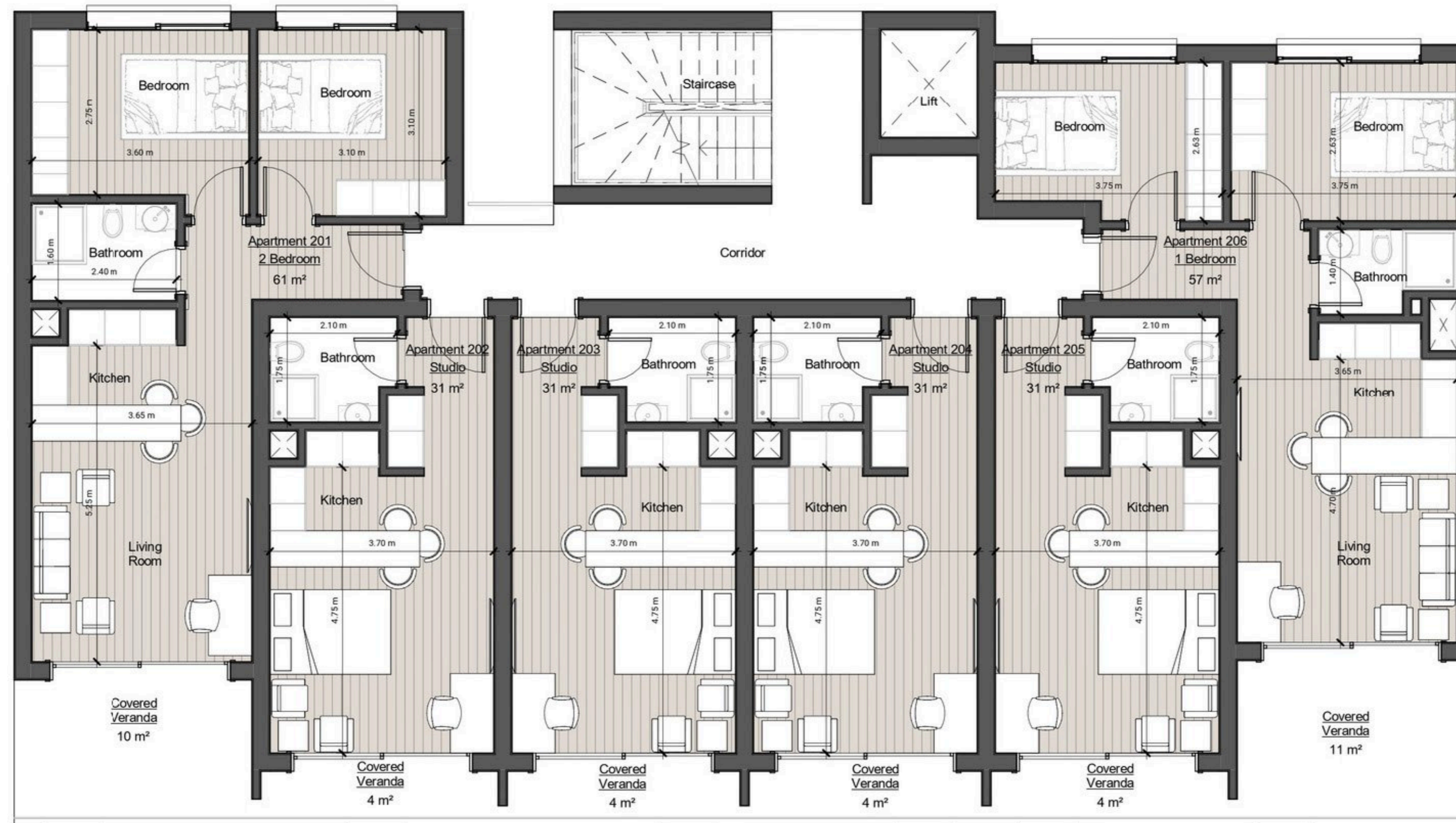


FLOOR PLANS

Second Floor

Floorplans

Second Floor

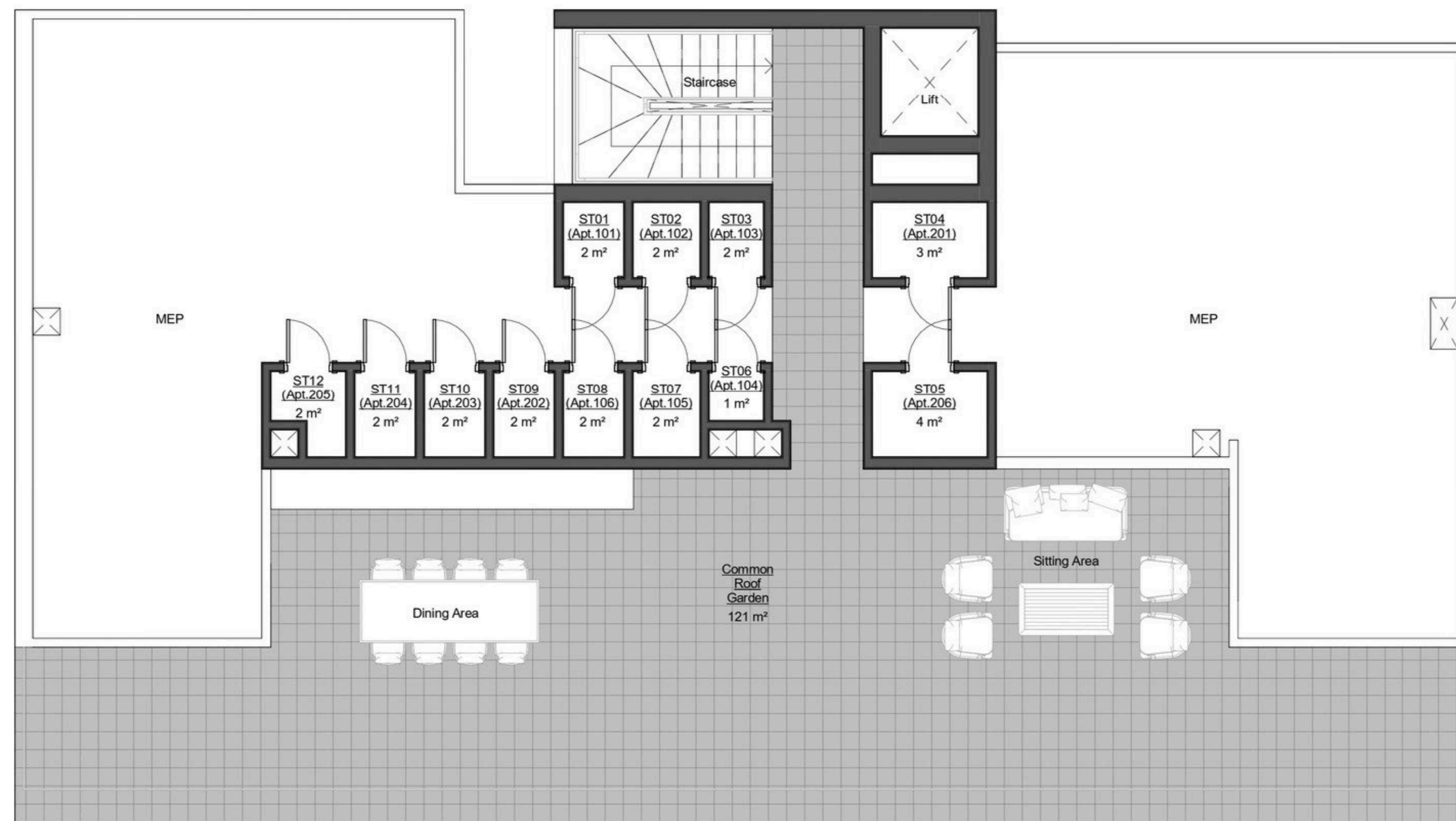


FLOOR PLANS

Roof Garden

Floorplans

Roof Garden





WHO WE ARE

25+ Company
Employees

80+ Million Euro
in Sales

300+ Apartment
Units

32 Development
Projects

3 Active
Cities

30K+ Square Meters of
Residential Space

SquareOne is a leading real estate development and investment group specializing in residential, commercial, and hospitality properties in Limassol and London. Our commitment to excellence and innovation sets us apart in the industry. Combining passion, experience, and professionalism we deliver the ultimate living and working environments. Our diverse portfolio includes luxury residential developments, prime commercial spaces, and unique hospitality ventures, all designed to meet the dynamic needs of these vibrant cities.

squareone