

# [ SEQUOIA ]

RESIDENCE



squareone

# squareone

[ SEQUOIA RESIDENCES ] - SquareOne

Nestled on Filikis Etaireias Street near Gladstonos Ave, SEQUOIA offers urban living in Limassol's vibrant heart. Adjacent to Lemesou B' Elementary School, this premier development provides immediate access to high-street shops, cafes, restaurants, schools, and pharmacies.

SEQUOIA features a selection of two one-bedroom, three two-bedroom, and two three-bedroom apartments, each with a dedicated parking space. The building ensures security with a camera-controlled main entrance.

Experience the essence of modern city life with SEQUOIA – where convenience meets quality in Limassol's bustling center. Enjoy contemporary amenities, secure living, and a prime location in this expertly designed residence.

[SQUAREONE.COM.CY](https://squareone.com.cy)

Property Type: *Residential*

Location: *Ayia Zoni*

Status: *Completed*

Completion Date: *TBA*

Energy Efficiency: *Grade A*











# Key Specifications

## Customisations provided by SQONE Design Team

The penthouses are thoughtfully designed with a distinct approach, offering enhanced features and a distinct living experience that sets them apart from all other units. With elevated specifications, premium materials, and tailored design features, these residences embody a higher standard of luxury and sophistication. These elevated specifications also contribute to increased market appeal and higher potential returns, making the penthouses especially attractive to investors.

**3.2m Net** Internal Height

**2.9m** Thermal Aluminium Windows

**Italian** Kitchen & Wardrobes

**European** Ceramic Tiles

**Grip Ceramic** Tiled Roof Garden

**BBQ** Area

**Jacuzzi** Provision

**Aluminium** Pergola Provision

**Parquet Flooring** Semi Solid

**Interior Design** Services (FF&E)



# [ SEQUOIA ]

RESIDENCE

Unit

Bedrooms

Bathrooms

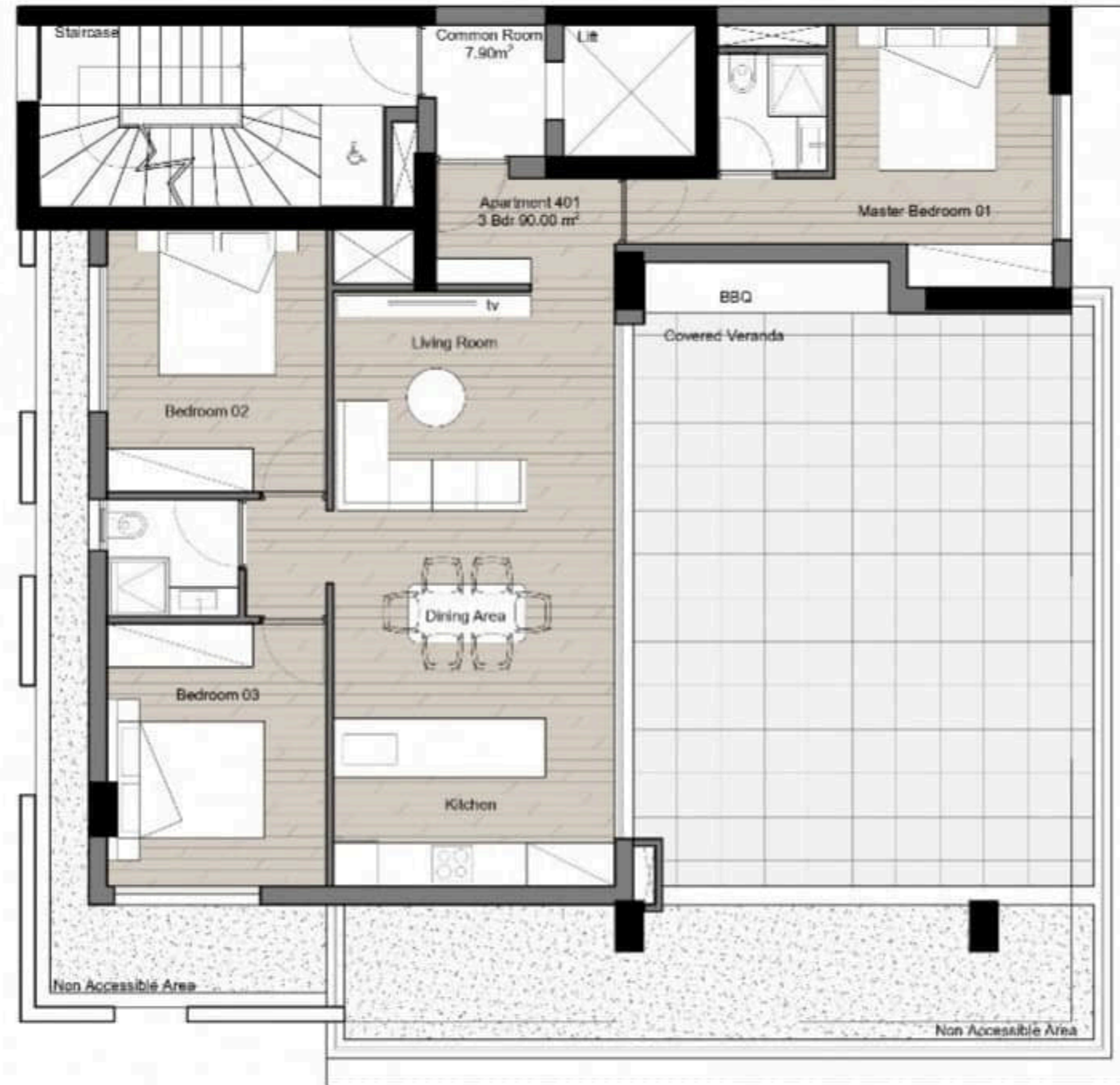
Covered Area

Covered Veranda

---

# FLOOR PLANS

hd1080 (24).jpeg

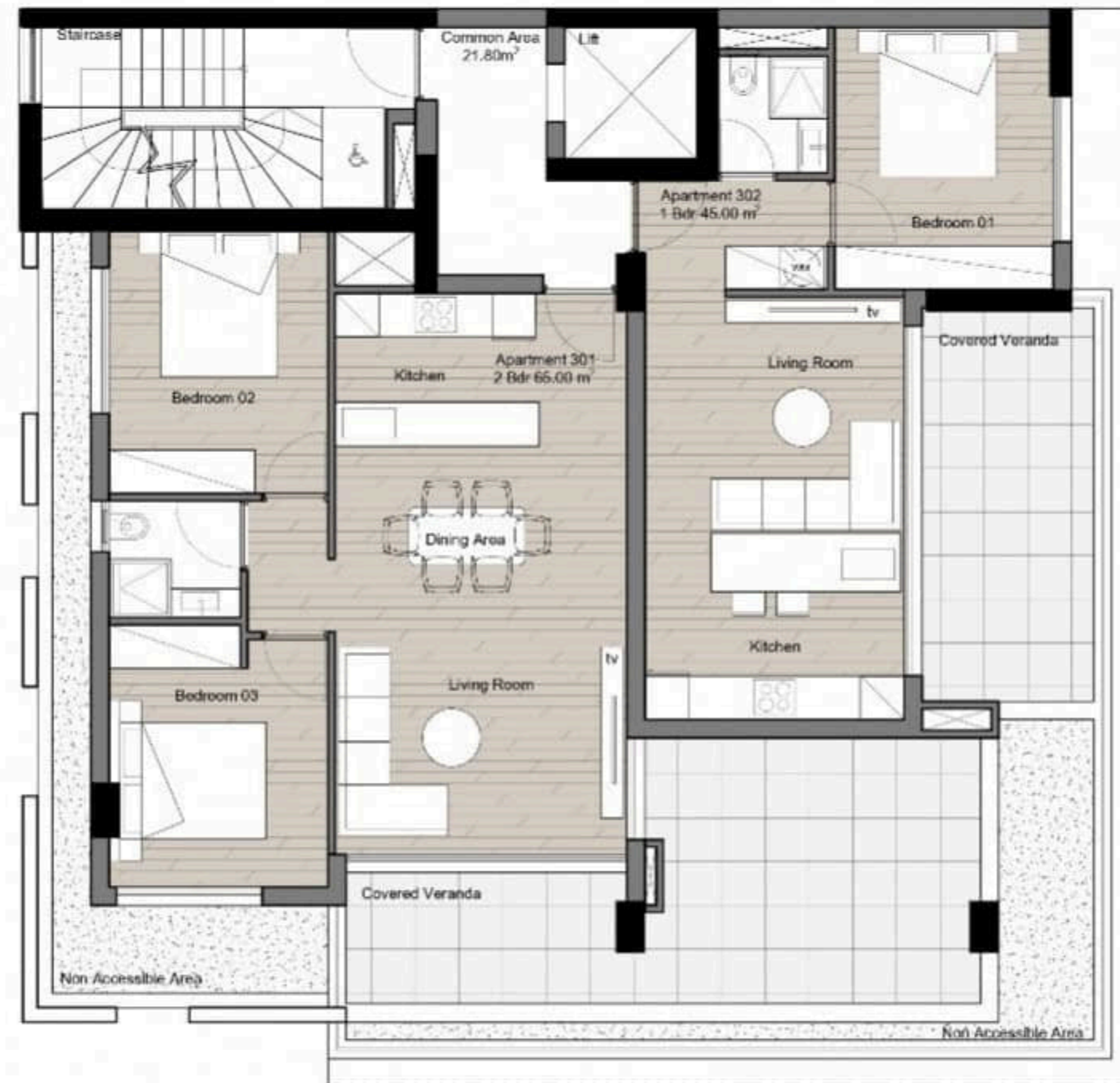


4th FLOOR

Sequoia Residences

# FLOOR PLANS

hd1080 (23).jpeg

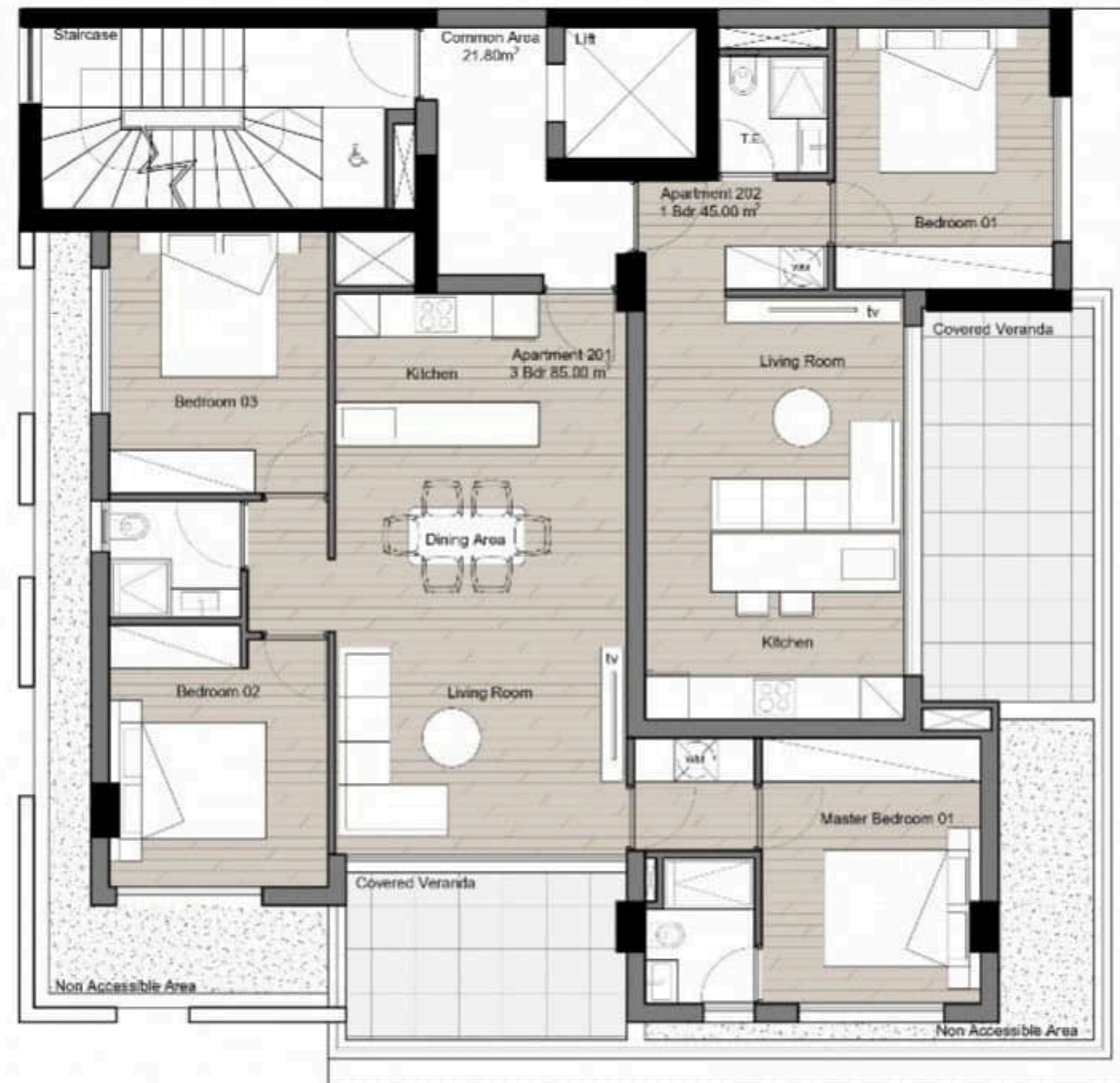


3rd FLOOR

Sequoia Residences

# FLOOR PLANS

hd1080 (22).jpeg

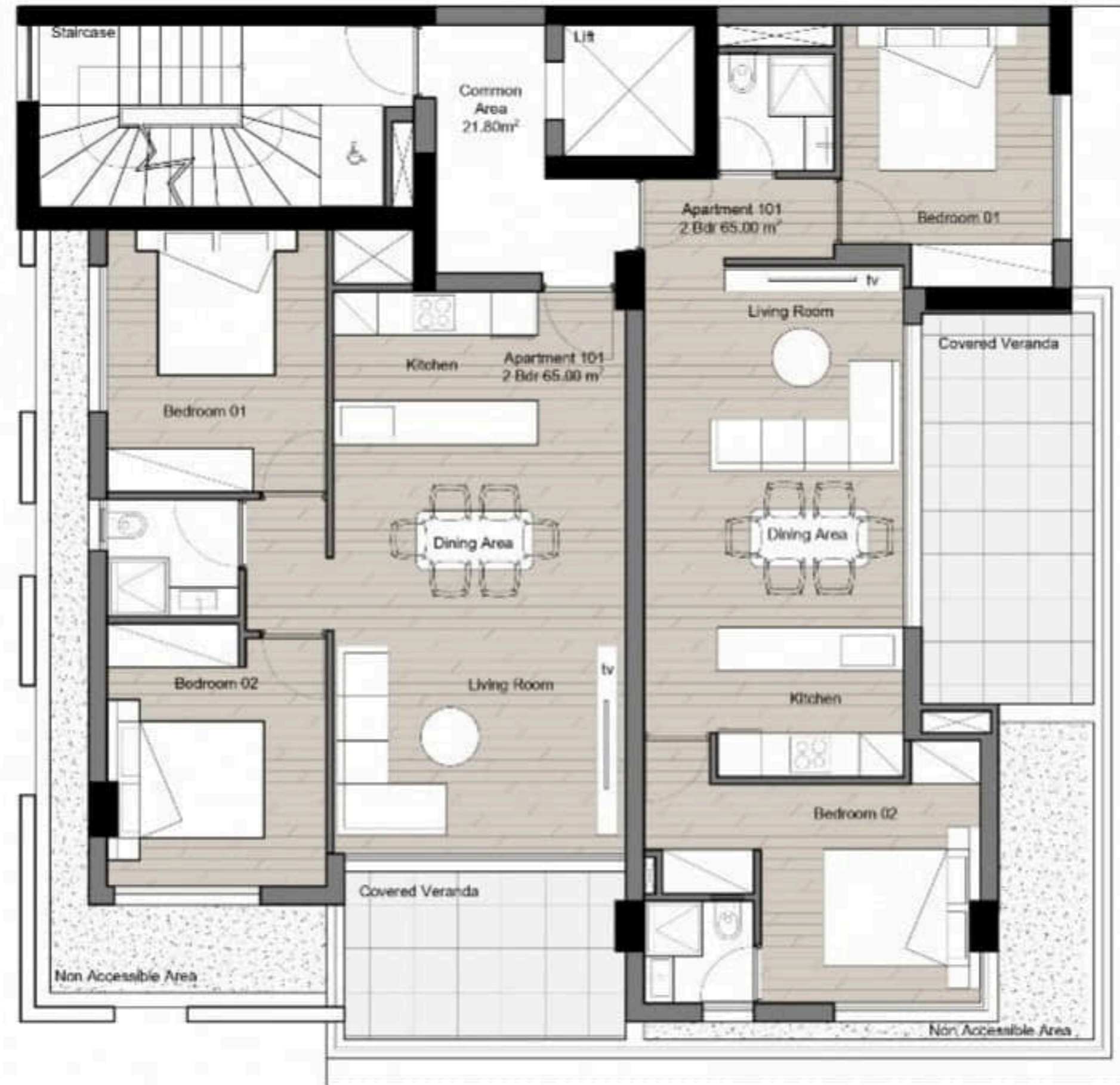


2nd FLOOR

**Sequoia Residences**

# FLOOR PLANS

hd1080 (21).jpeg

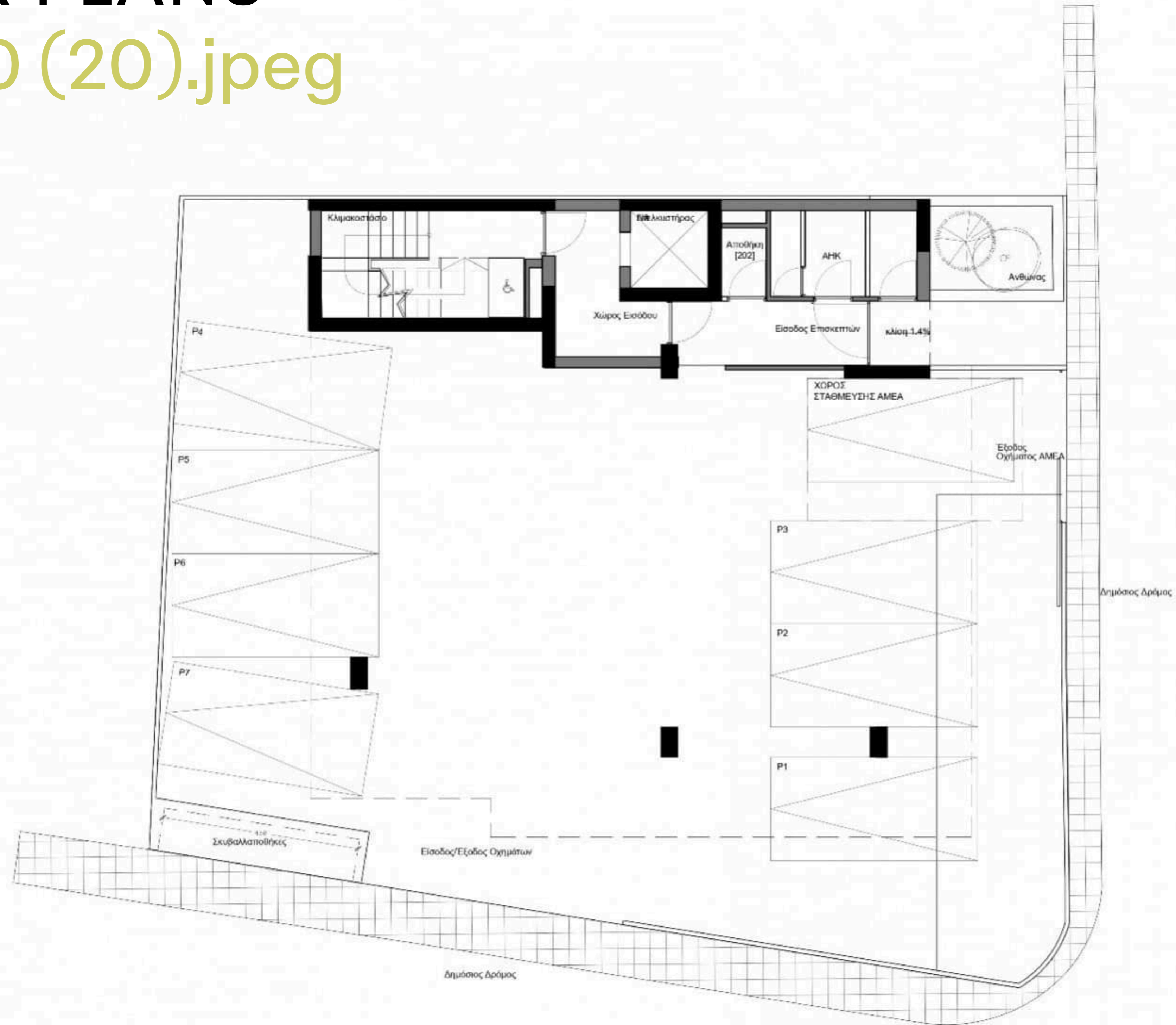


1st FLOOR

**Sequoia Residences**

# FLOOR PLANS

hd1080 (20).jpeg



GROUND FLOOR

Sequoia Residences

 SQone













# WHO WE ARE

**25+** Company  
Employees

**80+** Million Euro  
in Sales

**300+** Apartment  
Units

**32** Development  
Projects

**3** Active  
Cities

**30K+** Square Meters of  
Residential Space

SquareOne is a leading real estate development and investment group specializing in residential, commercial, and hospitality properties in Limassol and London. Our commitment to excellence and innovation sets us apart in the industry. Combining passion, experience, and professionalism we deliver the ultimate living and working environments. Our diverse portfolio includes luxury residential developments, prime commercial spaces, and unique hospitality ventures, all designed to meet the dynamic needs of these vibrant cities.

**squareone**